

 **PETER GURBANI**
MADE TO MEASURE | READY TO WEAR | ACCESSORIES

SUITS

Standard Style

Single Breasted



SB 2B
Notch Lapel
Regular Flap Pocket
Side vents



SB 2B
Peak Lapel
Regular Flap Pocket
Side vents

Standard Style

Double Breasted

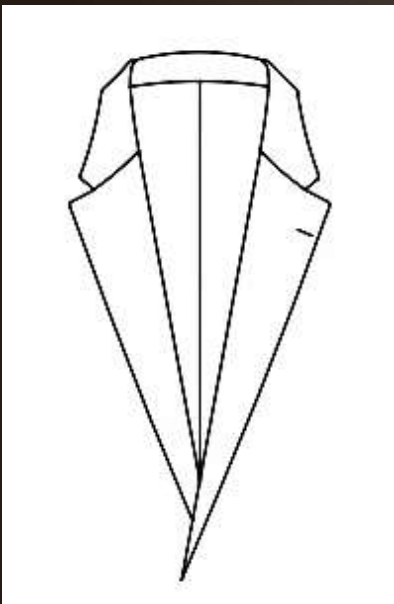


DB 6 Buttons (2 Fasten Buttons)
Peak Lapel
Regular Flap Pocket
Side vents

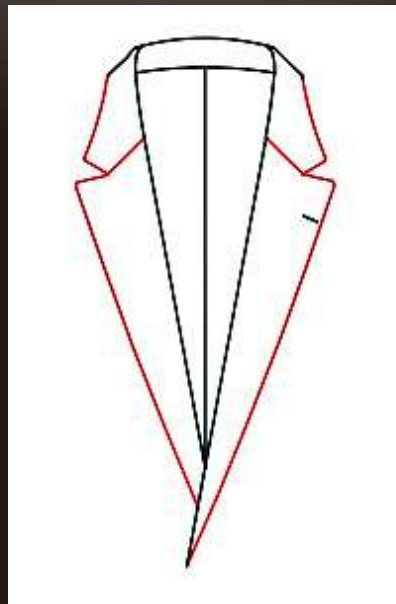


DB 4 Buttons (1 Fasten Button)
Peak Lapel
Regular Flap Pocket
Side vents

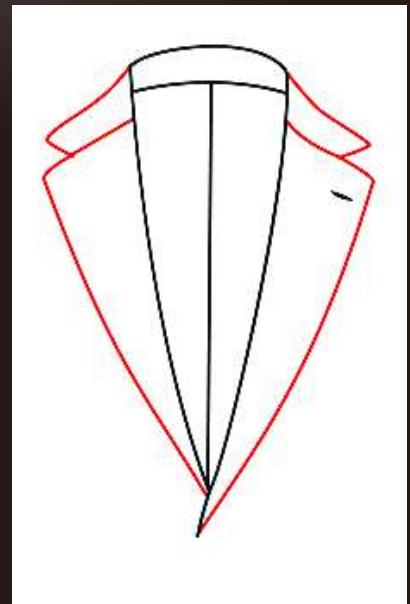
Notch Lapel



Notch lapel (0001)

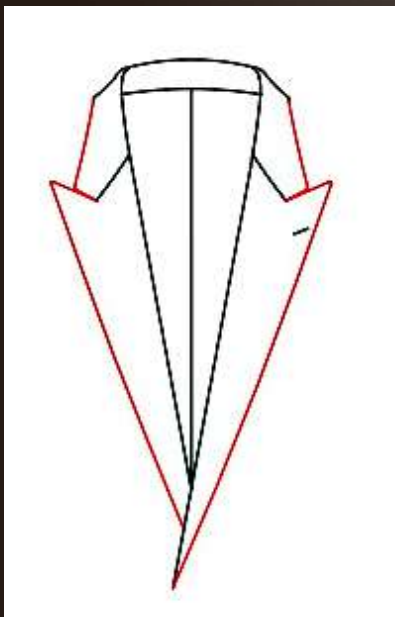


Semi-notch lapel (0003)

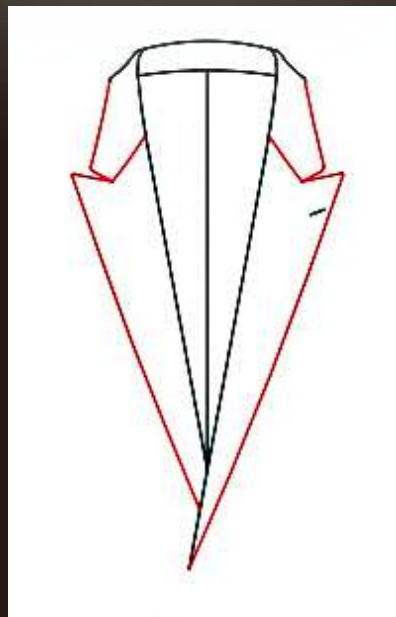


Wide notch lapel
lapel with 10.5cm(00S0)

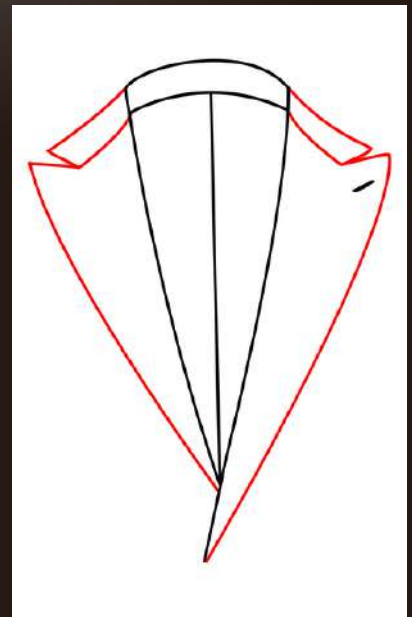
Peak Lapel



Peak lapel (0002)

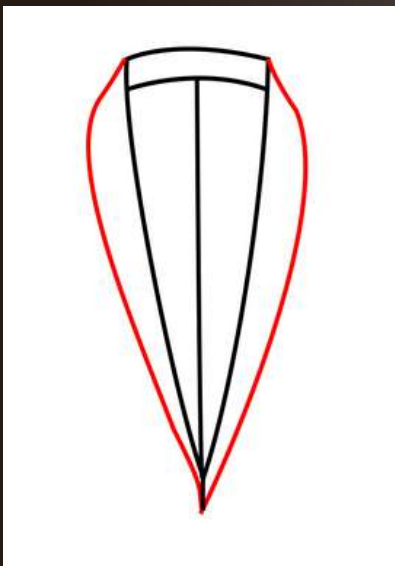


Semi-peak lapel (0004)

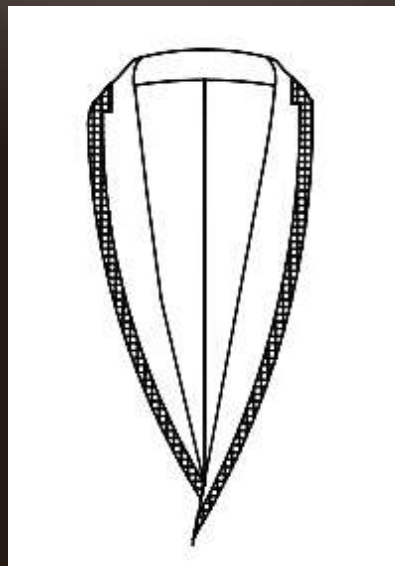


Wide peak lapel
lapel with 10.5cm(00S0)

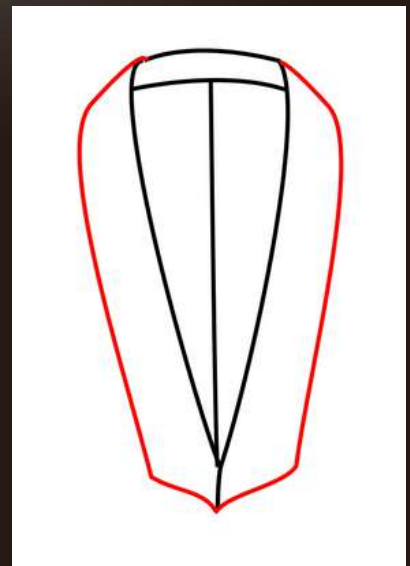
Shawl Lapel



Shawl lapel (0005)

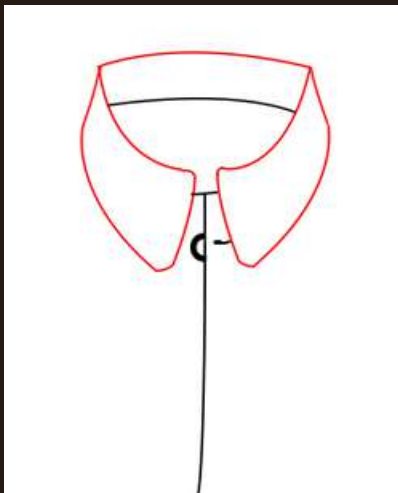


Shawl lapel with satin
on edge (0691)

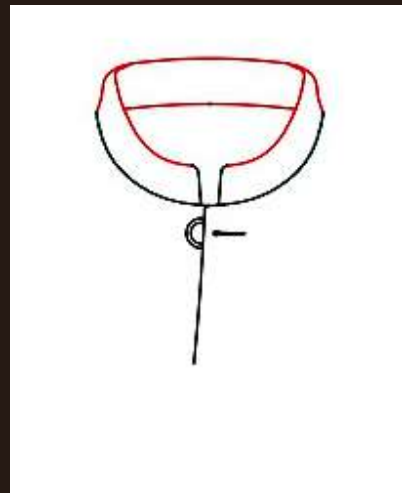


Arc underpart-shawl
lapel (00F2)

Collar



Zhongshan collar (0008)



Band collar (0009)

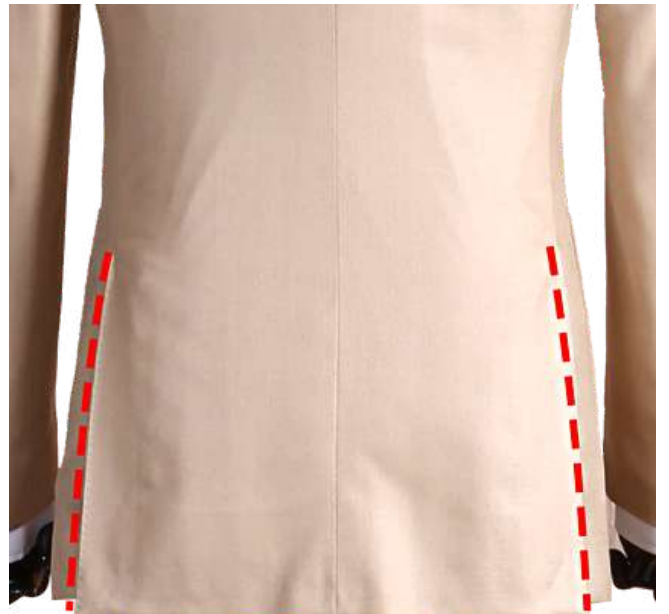
Vent



No Vent (04N0)



Central Vent (04N1)



Side Vents (04N2)

Front Button Amount and Front buttonhole style



Single breasted one button (0011)



Single breasted Two buttons (0012)



Single breasted Three buttons (0013)

Front Button Amount and Front buttonhole style



Double breasted
Four buttons
(Two buttons fasten)
(0015)

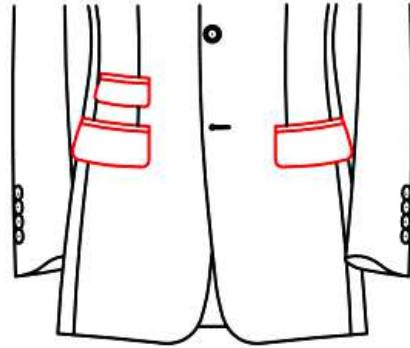


Double breasted
Six buttons
(Two buttons fasten)
(0016)



Double breasted
Four buttons
(One button fasten)
(0017)

Lower Pocket and Ticket Pocket



Normal slant pocket with normal slant ticket pocket (02A2)



Normal lower pocket and ticket pocket (0202)
2.5cm above lower pocket besom (0677)

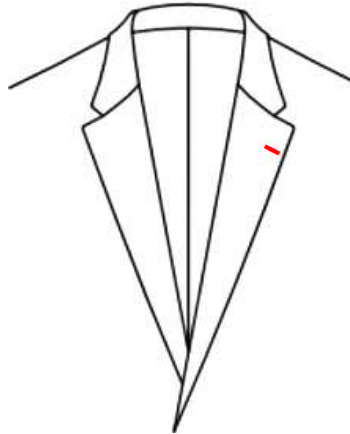


Normal lower pocket with welt ticket pocket (0206)
2.5cm above lower pocket besom (0677)



Double besom lower pocket with double besom ticket pocket (0234)
4.5cm above lower pocket besom (0676)

Lapel Sham Buttonhole



Left buttonhole (0541)



Two left buttonholes (0545)



Two right buttonholes
(no left buttonhole) (0546)



Real round buttonhole (0554)
Customer appointed lapel buttonhole
thread color (05A3)

Single Breasted Suits



SB, 2B (0012)
Peak Lapel (0002)
Regular Flap Pocket (0201)
Regular Belt Loops (3330)



SB, 2B (0012)
Notch Lapel (0001)
Regular Flap Pocket (0201)
Regular Belt Loops (3330)

Double Breasted Suits



DB, 4B (1 Fasten Button) (0017)
Peak Lapel (0002)
Lower Patch Pocket (02J1)



DB, 6B (2 Fasten Buttons) (0016)
Peak Lapel (0002)
Lower Besom Pocket (0231)

Safari



Zhongshan Collar (0008)
Full Sleeve (0612)
Lower Flap Pocket (0201)
Upper Welt Pocket (0311)
Customer Appointed button (0638)

Safari



Band collar (0009)
Full Sleeve (0612)
Lower Flap Pocket (0201)
Upper Welt Pocket (0311)
Customer Appointed button (0638)



Zhongshan Collar (0008)
Half Sleeve (061U)
Upper Patch Pocket (0150)
Lower Patch Pocket (02J1)



Single Breasted Suit



Double Breasted Suit



Zhongshan Lapel Suit

Special Occasion



SB, 2B (0012)
Notch Lapel (0001)
Lower Flap Pocket (0201)



DB, 6B (2 Fasten Buttons) (0016)
Wide Peak Lapel (0002)
Lower Flap Pocket (0201)

Special Occasion



SB, 1B (0011)
Shawl Lapel (0005)
Cloth Covered Button (0365)
Lower Besom Pocket (0231)
Trousers Side Seam (331F)



SB, 2B (0012)
Notch Lapel (0001)
Lower Flap Pocket (0201)

Corduroy Suits



SB, 2B (0012)
Notch Lapel (0001)
Right & Left Double Fold Breast Patch Pocket (0123)
Lower patch Pocket With Diamond Flap (02Y2)
Whole Back Style (04M4)

Corduroy Suits



SB, 2B (0012)
Notch Lapel (0001)
Upper Welt Pocket (0311)
Lower patch Pocket (02J1)
Contrasting Elbow Patch (06A5)

Corduroy Suits



SB, 3B (0013)
Notch Lapel (0001)
Upper One Patch Pocket (0150)
Lower patch Pocket With Flap (02J1)
Contrasting Elbow Patch (06A5)

Corduroy Suits



DB, 6B (2 Fasten Buttons) (0013)
Wide Peak Lapel (0001)
Lower Patch Pocket (0150)

Overcoat Suits



SB, 2B (6012)
(Hidden Placket) (6131)
Notch lapel (6001)
Welt Slanted pocket (62S1)



SB, 2B (6012)
Peak Lapel (6002)
Normal Lower Pocket (6201)

Overcoat Suits



SB, 2B (6012)
Peak Lapel (6002)
Normal Lower Pocket (6201)

SB, 3B (6013)
Peak Lapel (6002)
Normal Lower Pocket (6201)

Overcoat Suits



DB, 6B (2 Fasten Buttons) (6016)
Semi Peak Lapel (6004)
Welt Slanted Pocket (62S1)

Buttons



Three kissing sleeve buttons (0625)



Imitation Slit Four flat buttons (0611)



Five kissing buttons (0628)

Contrasting Button Hole



Fourth sleeve buttonhole thread color (092A)



5th sleeve buttonhole thread appointed color (092R)



Real sleeve slit and single-faced sleeve vent and
real slant buttonhole (06X9)

Trousers



Plain front (302L)



Single pleat forward
side seam (3021)



Double pleats forward
side seam (3023)

Side Waistband Style



Adjustable buckle band (3352)
buckle number (QZMAB02-2)



Waist adjust buckle (33TA)
with beltloop (GB201)

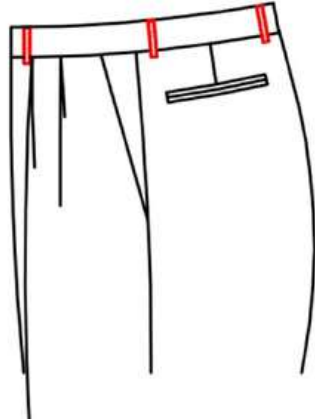


Square Adjust buttons (3351)



Pointed adjust buttons (33T4)

Belt Loop



No belt loop (3329)



Normal belt loop (3330)



Double belt loop (3331)



2.0cm wide slant beltloop (3335)

Front Pocket



2.5 slant pocket (3104)



Sideseam pocket (3130)



Double besom pocket (3131)



Welt pocket (3132)

Watch Pocket



Normal right watch pocket (3180)



Double besom right watch pocket (0545)

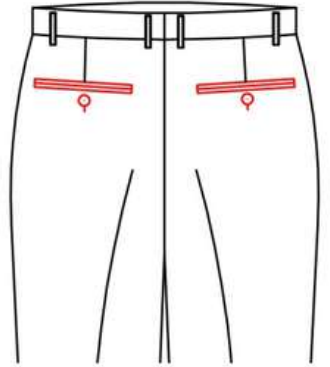


Left watch pocket with diamond flap (3174)



Vertical right welt watch pocket (05A3)

Back Pocket



No back pocket (31A0)



Besom back pocket (3220)

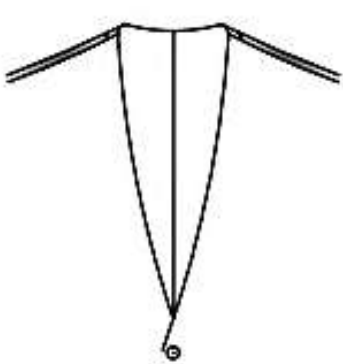


Besom back pocket with
button and buttonhole (3221)

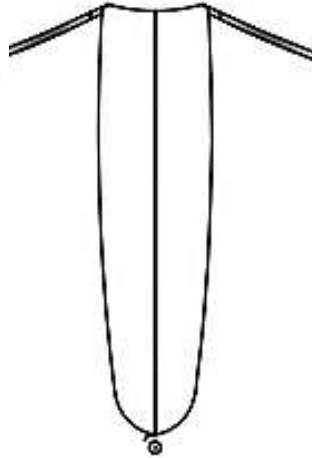


Double besom back pocket (3200)

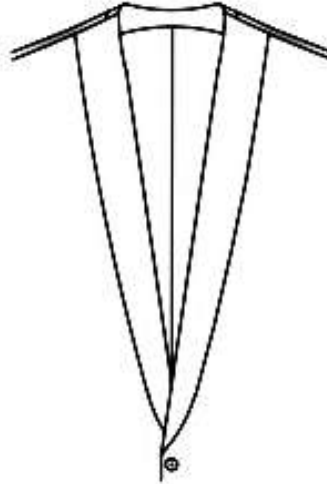
Vest



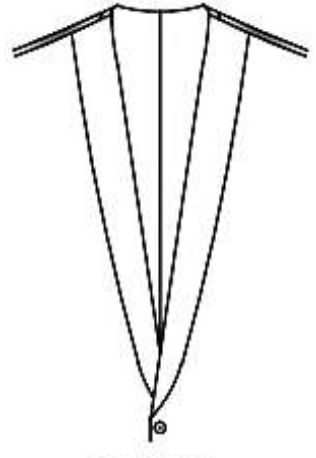
Standard V Shape,
No Collar
(4000)



U Shape,
No Collar
(4001)



Shawl lapel with
Collar band
(4002)



Shawl lapel,
No Collar band
(4003)

Vest



V Neck (4000)
6 Button (401P)
Lower Welt Pockets (4300)



U Neck (4001)
4 Button (401D)
Lower Welt Pockets (4300)



V Neck (4001)
3 Button (401C)
Double Basom Pocket (4301)
Contrasting Button Hole Thread (464D)